


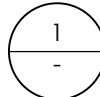
MINIMUM SETBACKS:

- FRONT (SOUTH): 4.50m
- REAR (NORTH): 4.20m
- INTERIOR (EAST): 7.00m
- SIDE (WEST): 3.25m

Building projections into any setback shall not exceed 1.50 m

MAX. SITE COVERAGE: 45%

14



SITE PLAN
 1:200



1
-
ELEVATION EAST
1:200

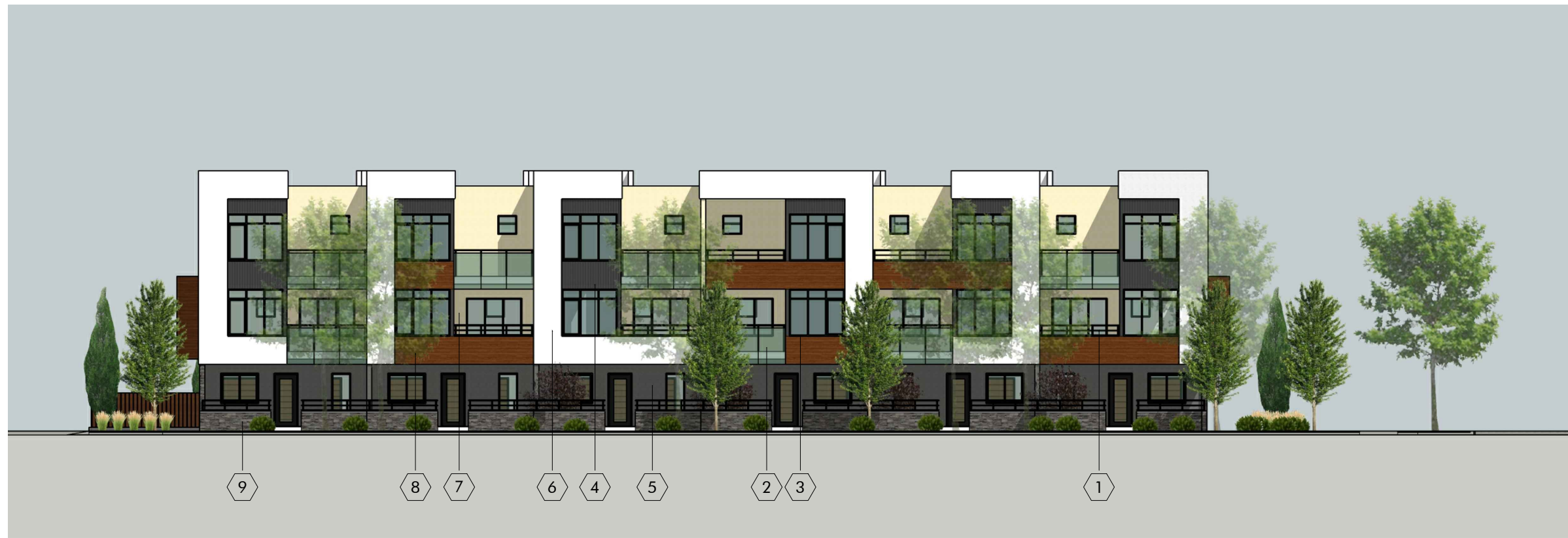


2
-
ELEVATION SOUTH
1:200

KEY NOTES

- 1 ALUMINUM RAILING
- 2 GLASS RAILING
- 3 ALUMINUM WINDOWS
- 4 CORRUGATED METAL SIDING TO MATCH ALUMINUM WINDOWS
- 5 STUCCO (GREY 1)
- 6 STUCCO (BONE WHITE)
- 7 STUCCO (BEIGE)
- 8 METAL SIDING
- 9 CULTURED STONE

**** COLOURS SHOWN ARE CONCEPTUAL ONLY AND WILL BE FINALIZED AT THE DEVELOPMENT PERMIT SUBMISSION



1
-
1:200
ELEVATION WEST



2
-
1:200
ELEVATION NORTH

KEY NOTES

1	ALUMINUM RAILING
2	GLASS RAILING
3	ALUMINUM WINDOWS
4	CORRUGATED METAL SIDING TO MATCH ALUMINUM WINDOWS
5	STUCCO (GREY 1)
6	STUCCO (BONE WHITE)
7	STUCCO (BEIGE)
8	METAL SIDING
9	CULTURED STONE

**** COLOURS SHOWN ARE CONCEPTUAL ONLY AND WILL BE FINALIZED AT THE DEVELOPMENT PERMIT SUBMISSION

APPENDIX 2 - ELEVATIONS WEST AND NORTH